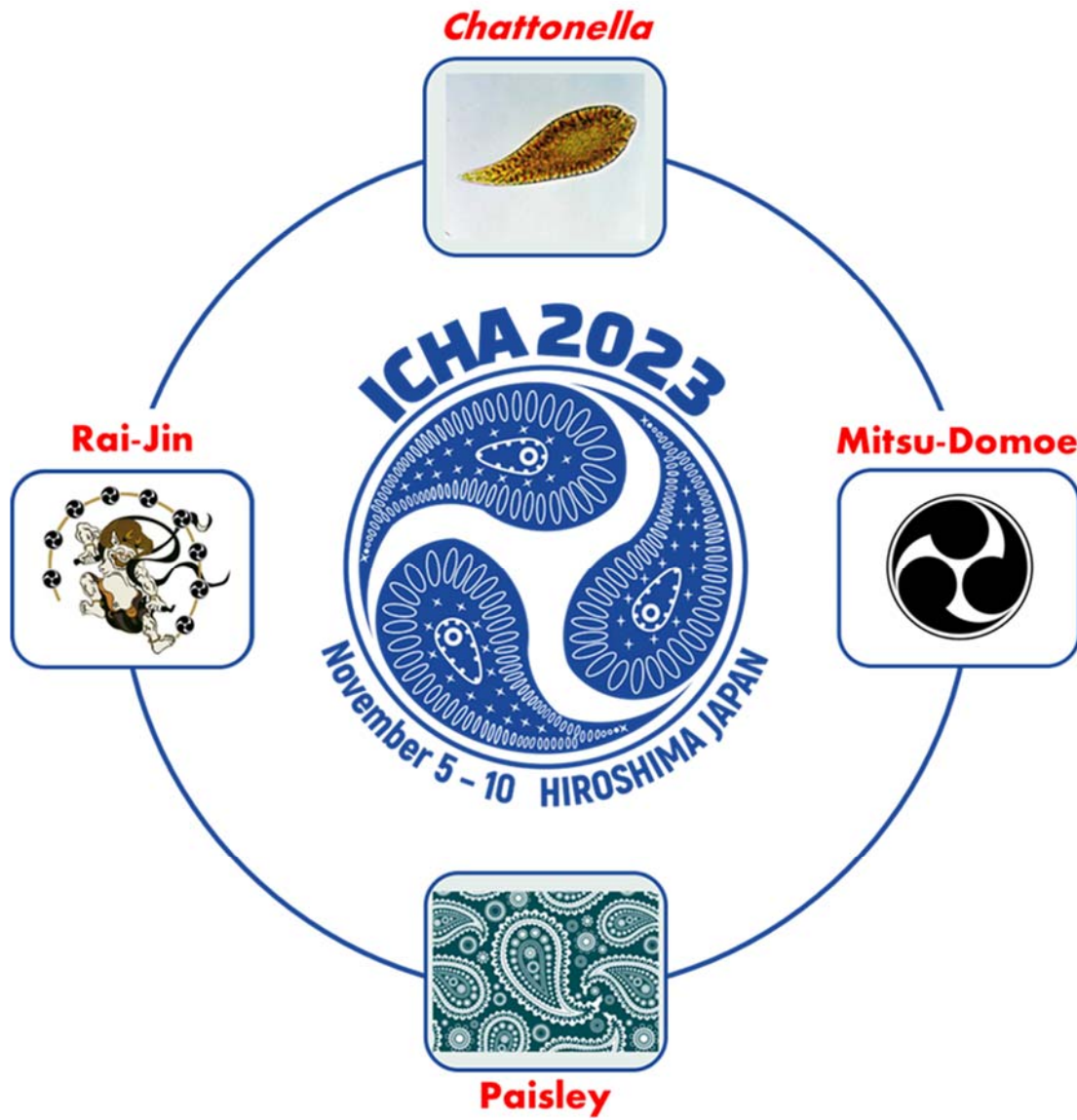
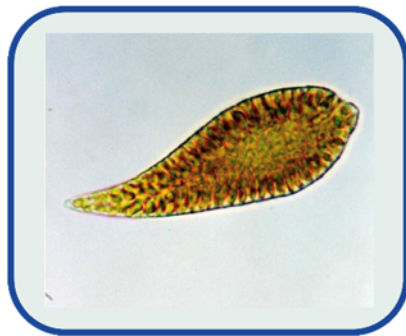


Conference logo of ICHA 2023 and its origins





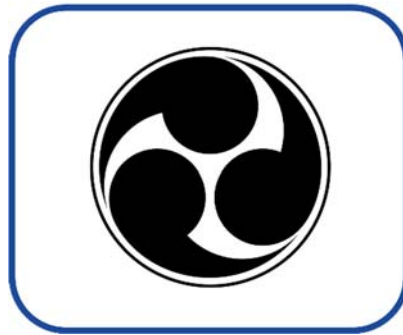
The conference logo of ICHA 2023 is "*Chattonella*-Paisley in the style of a Samurai's Family Crest (=Mitsu-Domoe)".



"*Chattonella*" is belonging to Raphidophyceae and known to be the most noxious HAB species in Japan. Therefore, many studies on the physiology and ecology of *Chattonella* have been conducted in Japan. Its teardrop shape is somehow resembling the "paisley" pattern.



"Paisley" or paisley pattern is a type of textile design using the boteh or buta, a teardrop-shaped motif with a curved upper end. It is used to decorate clothes, wallpapers, curtains, sofas, ties, etc.



"Mitsu-Domoe" is known as a family crest of Samurai, as well as the shrine crest of Hachiman Shrine, and it is the pattern on the drum held by the god of thunder (= "Rai-Jin"). The pattern of "Mitsu-Domoe" is comprising three comma-shaped figures in a circle. There are various explanations about the meaning of this pattern, but one explanation is that it represents thunder, with the round part representing the striking point and the tail-like part representing the lightning.



"Rai-Jin" is a god of lightning, thunder and storms in Japanese mythology and the Shinto religion. It is typically depicted with fierce and aggressive facial expressions (appearance of a demon), beating thunder drums (den-den daiko) with "Mitsu-Domoe" symbols drawn on them. Iconography of Rai-Jin are often found in Japanese temples and shrines. It is usually depicted alongside "Fū-Jin", the god of wind.

A short movie of the ICHA 2023 logo

YouTube: "ICHA 2023 Channel" A short movie introducing the conference logo of the 20th International Conference on Harmful Algae (ICHA 2023) Hiroshima, Japan.

<https://youtu.be/1Ng4MkI31i4>